

Acknowledgements

Brochure produced under the direction of



Twin Falls City
Historic Preservation
Commission

and

Twin Falls Area Chamber of Commerce

Illustrations by Elizabeth Mowrey

Research and Editing by

Sonia Alexander, Fran Frost, and Paul Smith

Design by Monie Smith

These publications have been financed in part with federal funds from the National Park Service, U.S. Department of the Interior made available through the Idaho State Historical Society, State Historic Preservation Office. However, the contents and opinions do not necessarily reflect the views of the Department of Interior.

This brochure is based on information from the National Register of Historic Places nomination for Twin Falls City Park Historic District listed in 1978.

For more information on the Twin Falls area and local lodging, call 1-866-TWINFALLS or visit www.twinfallschamber.com



For additional information on Idaho, call 1-800-VISIT-ID.



Twin Falls, Idaho

City Park Historic District



A Walking Tour

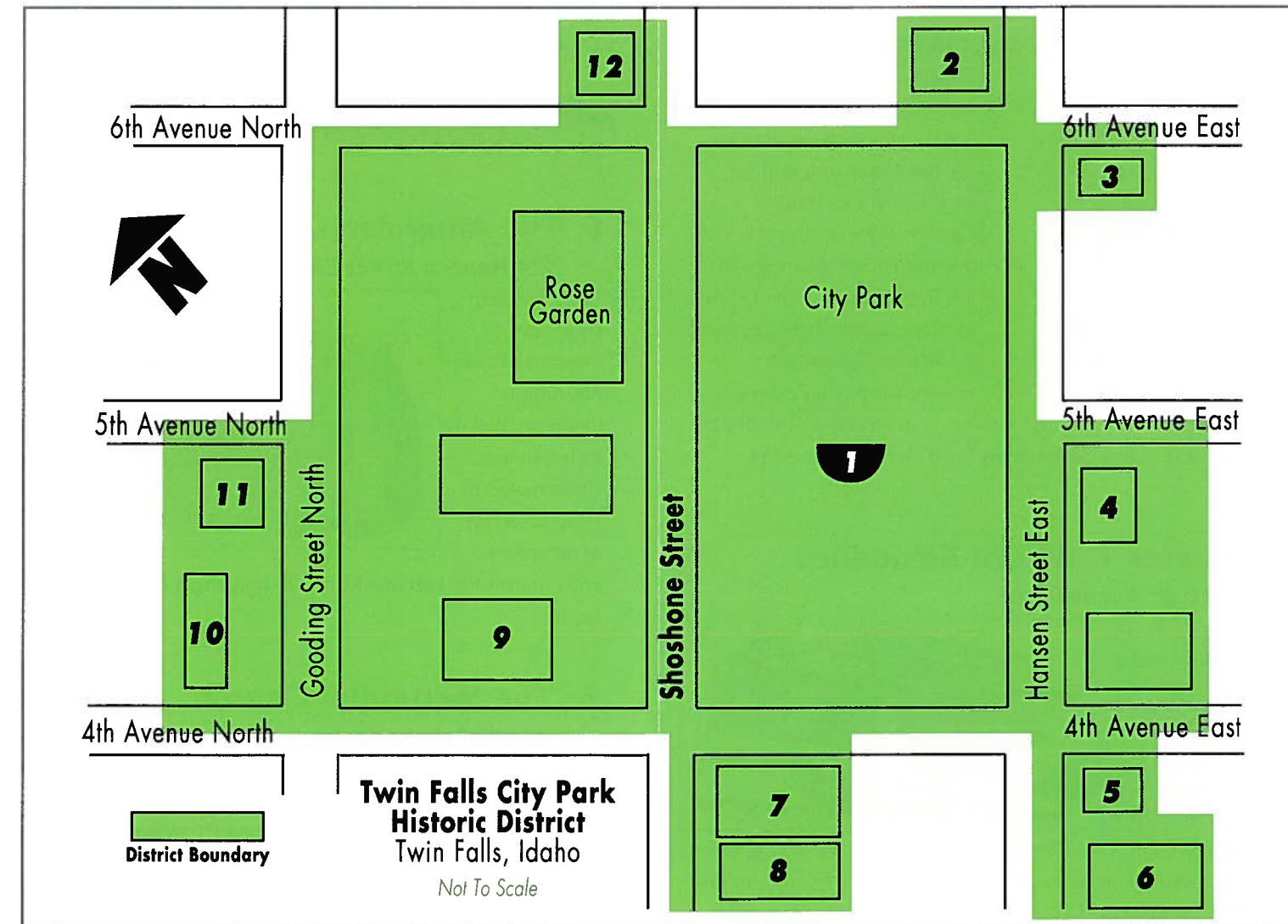
Twin Falls City
Historic Preservation Commission
and
Twin Falls Area
Chamber of Commerce

Twin Falls City Park Historic District

The Twin Falls City Park, located between Shoshone and Hansen Streets and 6th and 4th Avenues, has been the home of local activities for over 100 years. With its lava rock bandshell and lovely old trees, the park was designed by E. L. Masqueray, the planner who designed the original Twin Falls town site. The area around the park includes four churches, the county courthouse, the public library, the former American Legion Hall, White Mortuary, and a rose garden. The buildings in this area, none over three stories tall, primarily date from 1909 to 1920,

and the area is considered architecturally significant for its inclusion of many of the city's (and several of the state's) finest ecclesiastical and public buildings. United by their scale, age and function, the buildings create a cohesive environment while presenting a diversity of styles typical of the period and region. The park area still retains much of its original charm and character.

Join us as we tour the Twin Falls City Park Historic District.



1. The Park and Lava Rock Bandshell

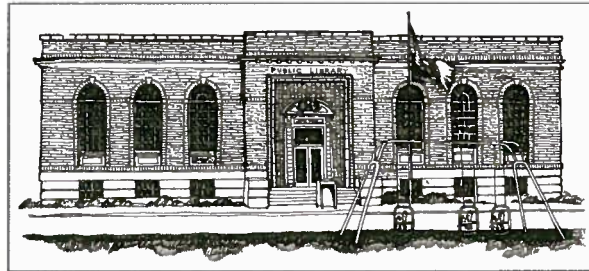
The park itself was intended to be the focal point of Twin Falls. Early residents worked tirelessly to establish the trees in the park. Newly planted trees were watered by hand with water hauled from four blocks away. The park's most striking feature is the historic bandshell, a WPA project of the early 1930s. It hosts many events each year, most notably the Twin Falls Municipal Band concerts every Thursday evening during the summer. The Municipal Band has been performing each summer since its very first performance on July 4, 1906. The Twin Falls City Park is one of the most inviting parks in the state.



4. Twin Falls Public Library

Corner of Hansen Street E. and 5th Avenue E.

The public library is a classically inspired one-story brick building which was constructed in 1939. Through the years, it has undergone several expansion projects on its southern end, but the original building can still be seen on the corner of Hansen Street East and 5th Avenue East.



5. Doctor J. N. Davis Residence

204 4th Avenue East

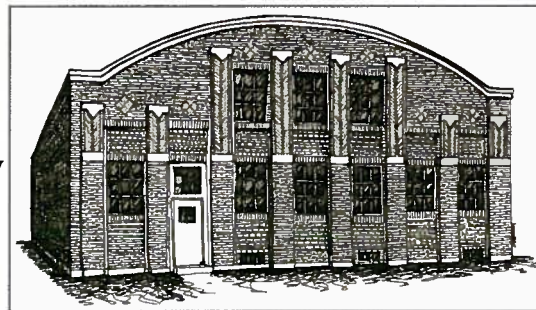


A one-story, smooth stucco, Spanish mission style building, this residence and office has arched, beveled-glass entries. It dates from 1938.

6. The American Legion Hall

324 Hansen Street East

In the modern style, this one-story brick building is distinguished by its brickwork. Constructed in 1928, it served as an armory and community hall in addition to housing the American Legion.

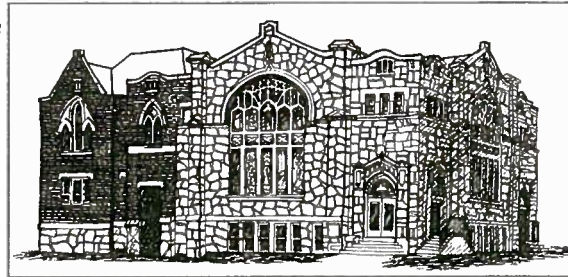


7. The Methodist Church

360 Shoshone Street East

A sandstone building in the Gothic style, the Methodist Church displays beautiful stained-glass windows. Originally constructed in 1908 of brick, it assumed its present appearance in a 1916 remodeling with a Tudor Gothic style displaying a brown sandstone exterior. Architect B. Morgan Nesbit was in

charge of the remodeling which removed a corner belfry and provided for a sanctuary seating 1,150. Later, a brick and concrete addition was built to the south side.



8. The Rex Arms Apartment Building

312 Shoshone Street East

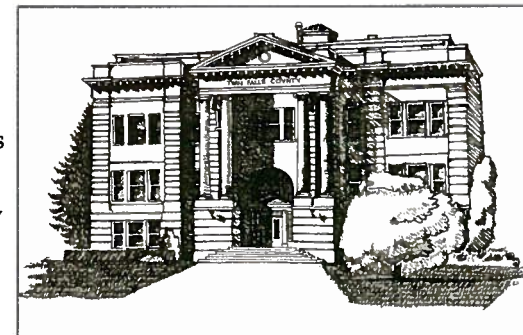


The Rex Arms Apartment Building is a three-story brick structure in the neo-classical style. Constructed in 1918, this \$45,000 building was designed by Burton E. Morse, Twin Falls' pioneer architect.

9. Twin Falls County Courthouse

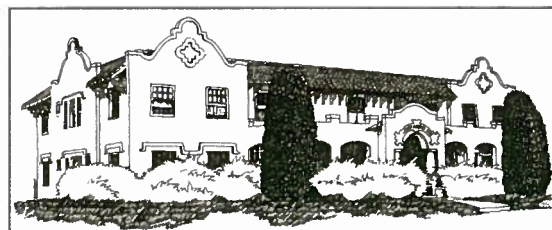
425 Shoshone Street North

Constructed of yellow brick, sporting stone columns and cornices, this three-story neo-classical revival building was the tallest in Twin Falls upon completion in 1909-10 and boasted the city's first elevator. Distinguished by an arched entry with a pediment portico supported by Ionic columns, the original mahogany and oak interior is still intact. Local architect C. Harvey Smith designed this structure.



10. The Justamere Inn

401 Gooding Street North



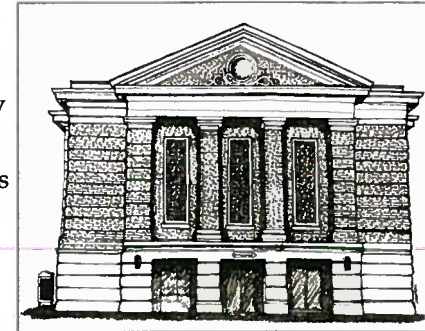
In a two-story, Spanish mission style, this building was constructed in

1910. It was originally a hotel, later an apartment building, and now serves as an office building, but closely resembles its original appearance.

11. The Presbyterian Church

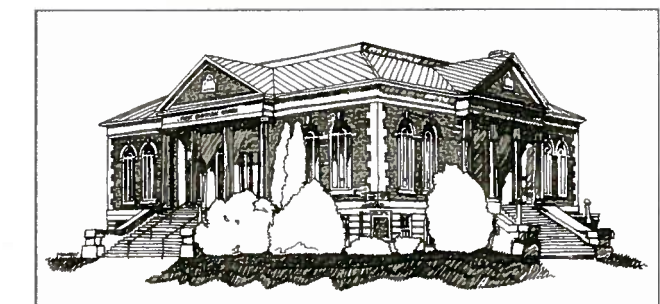
209 5th Avenue North

A neo-classically inspired building constructed in 1916, this church displays massive square columns over the inset entrance, presenting a graceful cartouche. The recessed courses in the "Denver Turkey shade" brick and long stained-glass windows pick up the rhythm of the columns. The interior dome was apparently a favorite device of architect John Visser, who designed another dome for the Methodist church two years later.



12. The First Christian Church

601 Shoshone Street North



In neo-classical revival style, this church is distinguished by its two long outside staircases and pediment portico with Doric columns, supporting gables over the southeast and southwest entrances. This church was designed by Portland architect Taymond W. Hatch in 1929, who also designed The First Christian Church in Lewiston, Idaho.

2. St. Edward's Catholic Church

139 6th Avenue East

Turning away from the bandshell stage and following the sidewalk leading to the northeast, you will see St. Edward's Catholic Church. This building is one of the best examples of the Renaissance revival style in Idaho and is distinguished by its twin 75 foot bell towers, terra cotta exterior,



and scagliola ornamented interior. Constructed in 1920-21 for \$60,000, it was designed by local architect Ernest H. Gates.

3. Lester T. Wright Residence

210 6th Avenue East

A brick bungalow with prairie style influences, this residence has been converted into professional offices. Originally built in 1909 for \$7,000, this seven room dwelling became the offices for Dr. Lamb in the 1920's. Since World War II, it has been used as a law office.

